

# Magic Spell Phonics

Augmented Reality



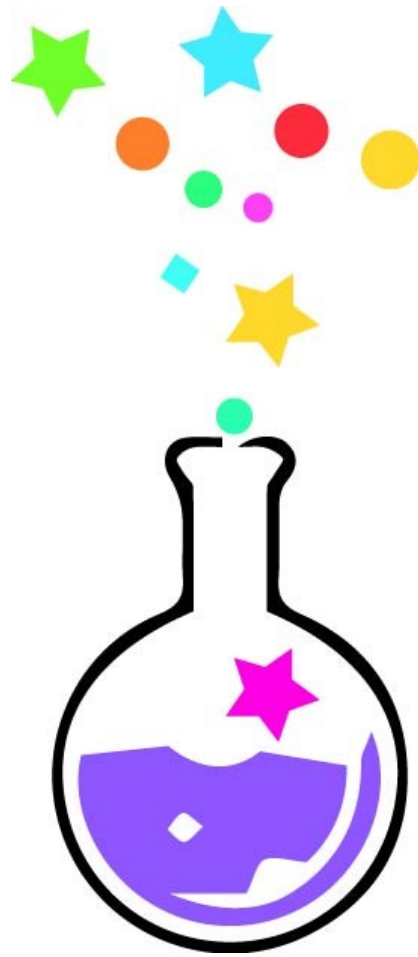
## INSTRUCTIONS

Learning to read is the foundation of children's early years education, it is essential in supporting learning throughout a child's education and improves employment prospects in later life.

There is much scope for early intervention and early assessment of reading abilities. This research has investigated how children are taught to read, and the methods used to assess reading. It initially investigated dyslexia to gain an insight into the mechanics of reading and why some children struggle with the processes.

This pilot study introduces a multi-sensory 3D intervention targeting alphabetic decoding. The pilot study used a focus group of stakeholders to identify requirements for an Augmented Reality application which runs on mobile devices.

Working with teachers I have developed an Augmented App which targets areas covered by the UK Government Phonics programme. I would like to recruit parents or guardians of children who would be like to help test this app.





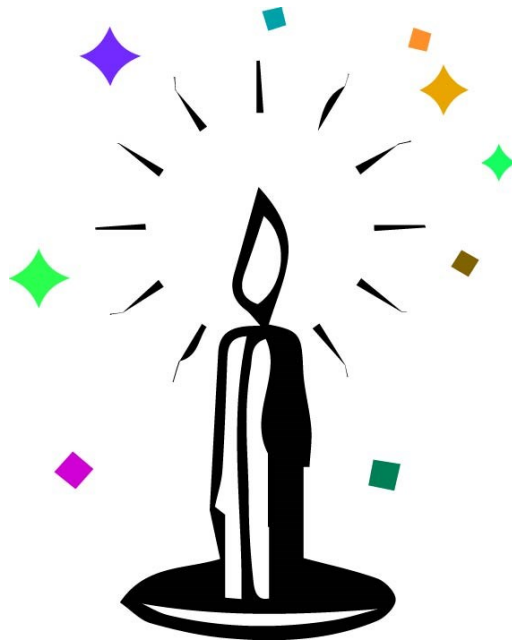
















# Magic Spell Phonics

Augmented Reality

